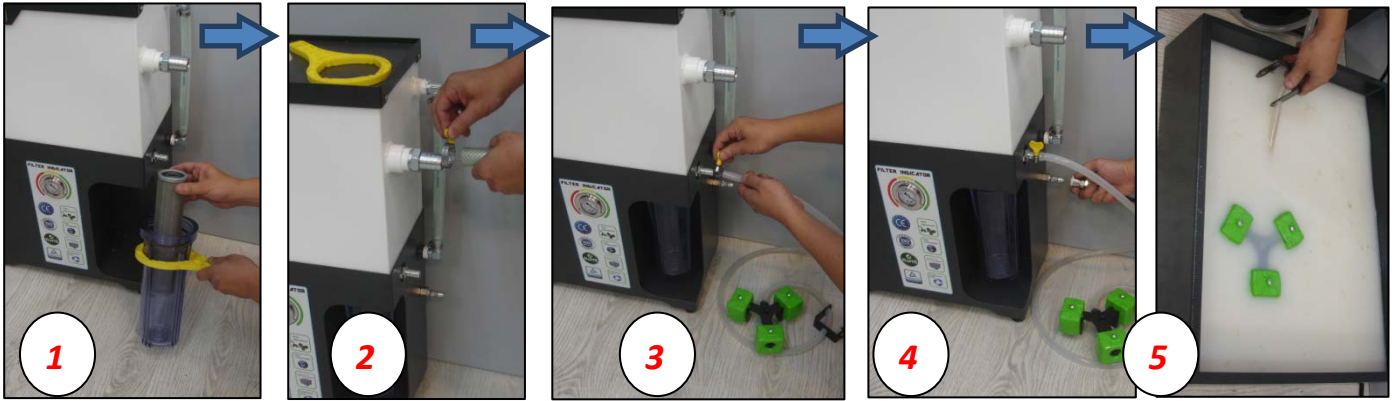


Installation Guideline

1 Remove the main unit off the crate and Check all peripheral accessories.



Installation Procedure:



1 Install the filter element. **2** Install the 1inch coolant outlet hose. **3** Install the float assembly hose. **4** Connect to air supply. **5** Attach float assembly bracket inside of coolant tank.



6 Be sure coolant return hose is not obstructed. **If there are any suspended solids or floating debris on the surface of the coolant, be sure to remove them before operating the unit.** **7** Ensure that the air pressure gauge is set to 35 P.S.I. which is the factory recommended setting. The air pressure regulator is located below the oil recycle reservoir. **8** The factory recommended Coolant Volume is to set the pump frequency at 1 pulse per second. If there are any suspended solids in the coolant, please set the Coolant Volume at 2 pulses per second. **9** Use the bubble gauge to level main unit. **10** A customer supplied oil reservoir can be added by placing it under the oil outlet. **NOTE:** To get a proper reading of air pressure gauge please turn the coolant volume switch On/off then on again.

For additional information refer to the service manual